

Riyadh, Saudi Arabia





# ABOUT US

From the heart of Riyadh's most dynamic business districts, we are redefining what it means to shape space. Our studios are strategically placed to serve bold local pioneers, global brands, and forward-thinking institutions across Saudi Arabia.

We don't just design interiors — we craft experiences. Whether it's a flagship retail concept, a hospitality transformation, or a workspace that fuels innovation, our mission is simple: bring your vision to life with precision, purpose, and beauty.

We specialize in integrated design and fit-out solutions across multiple sectors including corporate offices, healthcare, hospitality, retail, and F&B. Every project reflects the client's identity and the function of the space — ensuring it not only looks exceptional but performs with intent.

Every fit-out, every detail, is a statement of who you are and where you're going. Rooted in transparency, driven by creativity, and grounded in trust, we deliver spaces that don't just function — they inspire.



**Every detail has a purpose.  
Every space tells a story.**





# SECTORS WE SERVE



## Corporate Offices

We design and execute dynamic office environments that promote productivity, collaboration, and brand alignment—tailored to the operational demands of modern businesses.



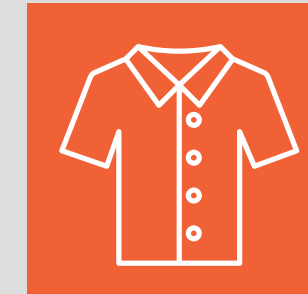
## Medical Clinics & Healthcare Centers

Our healthcare fit-outs prioritize hygiene, comfort, and efficiency. We follow regulatory standards while creating welcoming spaces for both patients and staff.



## Restaurants & Cafés

We specialize in creating unique dining atmospheres that blend style with functionality, enhancing customer experience while supporting smooth operational workflows.



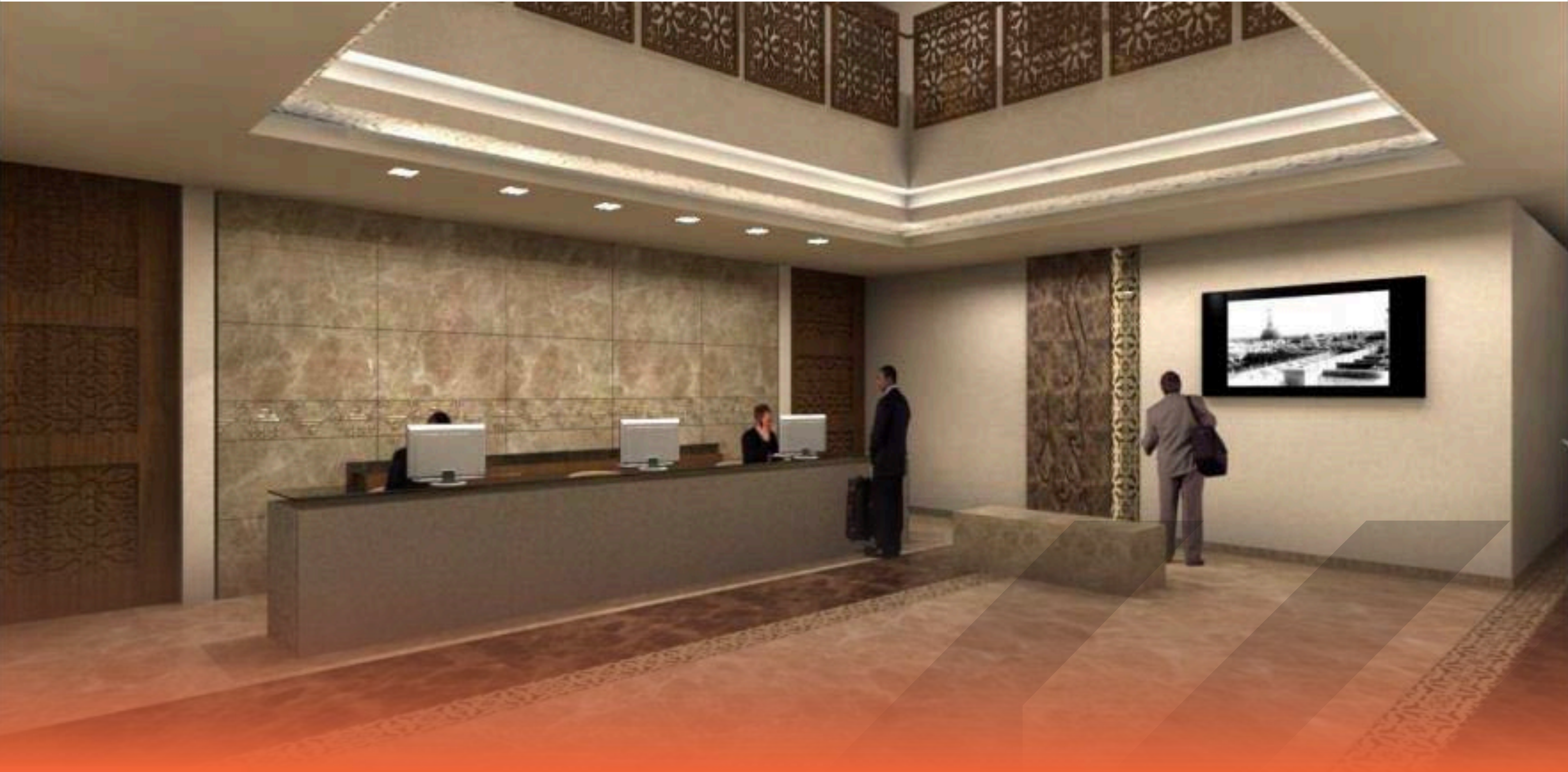
## Retail Shops & Commercial Outlets

Our team delivers engaging retail environments that drive footfall and sales. We focus on customer flow, product visibility, and aesthetic appeal to support your commercial goals.



## Hotels & Hospitality Spaces

We craft sophisticated hospitality interiors that offer comfort, luxury, and a memorable guest experience—each design tailored to your brand's identity and clientele.













# OUR APPROACH

Our approach begins with listening. Truly listening to your goals, your challenges, your vision. From there, we craft environments that do more than function..they reflect your identity and vision, in addition to moving your mission forward.

**We blend global design excellence with the soul of local culture, ensuring each project is not only beautiful, but deeply meaningful.**

Sustainability isn't a feature. It's a foundation. We use eco-conscious materials and smart, energy-efficient systems to build spaces that are as responsible as they are refined. Behind every project is a dedicated team of designers, architects, and technical minds working seamlessly to bring your space to life with clarity, precision, and purpose.

From the first sketch to the final detail, we deliver more than interiors. We deliver peace of mind. Because for us, design isn't a service. It's a promise.





# OUR MISSION

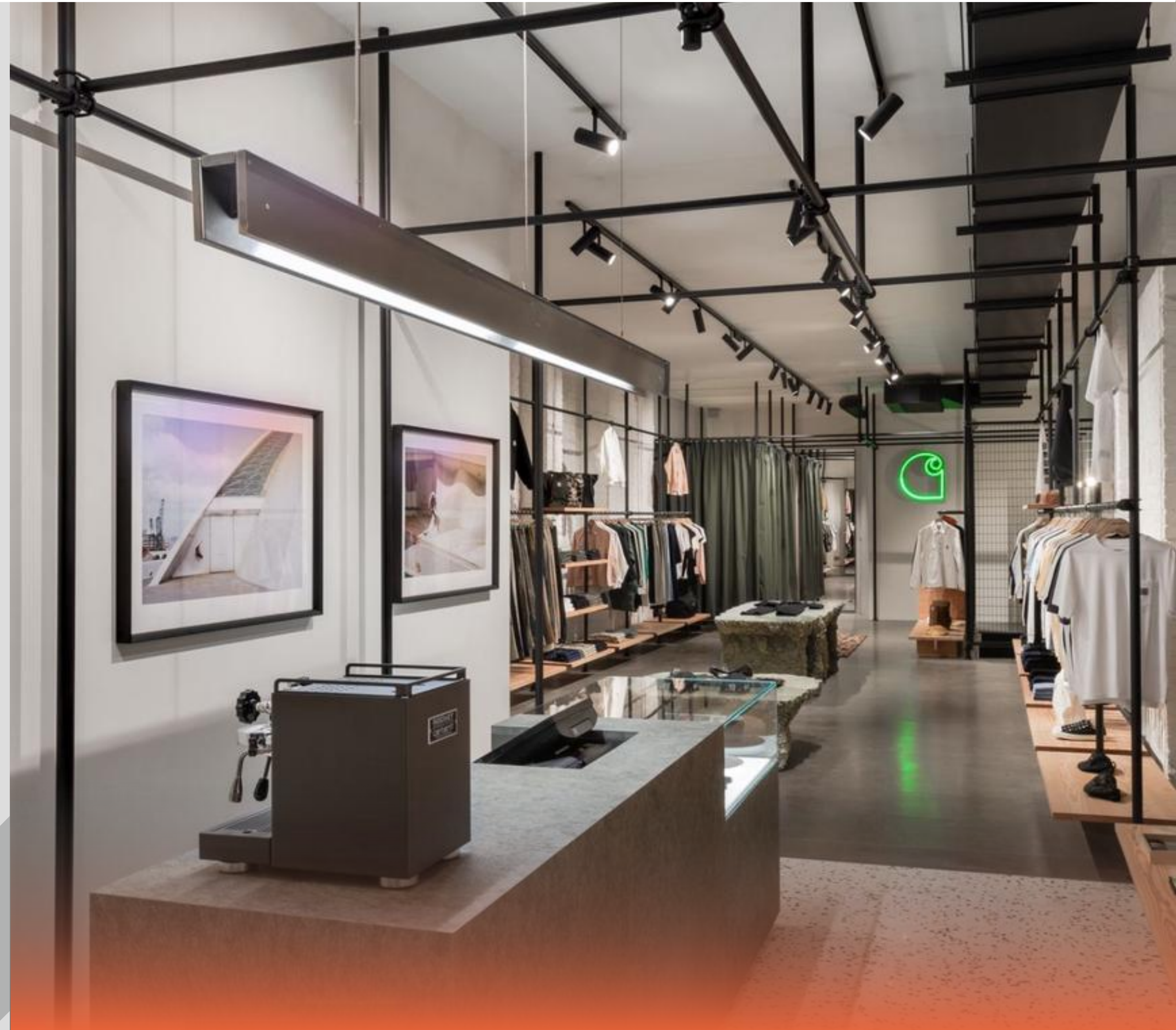
At Albani, we believe space is more than structure — it's a catalyst for culture, creativity, and change. Our mission is to redefine interior environments across various sectors in Saudi Arabia through innovative, functional, and culturally attuned design and fit-out solutions.

We craft intelligent, resonant spaces that don't just meet expectations — they move people.

**We're not here to follow trends.  
We're here to set them.**

Driven by purpose and precision, Albani is becoming the region's leading name in interior design and fit-out — known not only for quality and reliability, but for delivering experiences that matter.

Because when a space is designed with intention, it doesn't just house ideas — it fuels them. We help businesses transform vision into environment, brand into atmosphere, and routine into inspiration.







# OUR SERVICES

They are applicable across all sectors.

3

## Turnkey Solutions

We offer complete turnkey solutions, managing every aspect of your project from concept to completion. This hassle-free approach ensures a seamless experience with consistent quality and communication at every stage.

1

## Interior Design

Our expert design team creates innovative and functional interiors that reflect your brand identity and operational needs. We blend modern aesthetics with cultural nuances to deliver spaces that are both inspiring and practical.

4

## Design & Execution Consultancy

Our consultancy services bridge the gap between vision and reality. We advise on design feasibility, materials, and execution methods, ensuring your project is both visually striking and technically sound.

2

## Fit-Out Execution

We bring designs to life with meticulous execution, using high-quality materials and skilled craftsmanship. From partitioning to finishing, we ensure every element meets the highest standards of durability and design.

5

## Project Management

With a detail-oriented project management team, we oversee timelines, budgets, and quality assurance to deliver projects efficiently and without compromise. Our proactive approach ensures clear communication and minimal disruption.





# WHY CHOOSE US?

Proven track record of successful projects **99%**

In-house design and engineering team **99%**

Strict adherence to timelines and quality **95%**

Competitive pricing **95%**

Full client support from concept to post-deliver **95%**



# OUR PROCESS

## 1 Initial Consultation

We begin by understanding your vision, requirements, and goals through detailed discussions that lay the foundation for your project's success.

## 3 Proposal & Agreement

We provide a comprehensive proposal outlining scope, budget, and timelines, ensuring clarity and mutual agreement before project kick-off.

## 5 Handover

We complete the project with a thorough walkthrough and final quality assurance checks, handing over a space that's ready to use and built to impress.

## 2 Design Phase

Our design team transforms ideas into detailed concepts, incorporating functionality, brand identity, and aesthetics tailored to your specific needs.

## 4 Execution

Our execution team takes over with precision and professionalism, managing all site activities, materials, and quality checks to ensure seamless implementation.



# PROJECTS

1. SAMA - Sky Tower - Riyadh (3 floors)
2. SAMA - KAFD - Riyadh (2 floors)
3. World Trade Center - Bahrain Towers (5 floors)
4. World Trade Center - Tamkeen Towers (3 floors)
5. Boston Scientific - Riyadh
6. Addleshaw Goddard - Riyadh





# PROJECTS

# CONTRACTOR

1. Respiratory Clinics - Princess Noura University - Riyadh	King Abdullah Hospital
2. King Abdullah Hospital - King Abdullah Humanitarian Foundation	Saudi Binladin Group
3. Al-Ha'ir Correctional Facility - Ministry of interior - Riyadh	Saudi Binladin Group
4. Dammam Correctional Facility - Ministry of interior - Damman	Saudi Binladin Group
5. Dhahban Correctional Facility - Ministry of interior - Jeddah	Saudi Binladin Group
6. Works at King Abdulaziz International airport - Civil Aviation Authority - Jeddah	Saudi Binladin Group
7. Finishing works for the Olaya Towers - GOSI - Riyadh	Nesma Company
8. Hyundai - Riyadh	Sidr Company



# WHY ALBANI

**Your Vision. Our Expertise.  
Built for Saudi Arabia.**

Choosing Albani means partnering with a team that understands the landscape — culturally, commercially, and creatively. We deliver fit-out solutions that align with your goals, reflect your brand, and perform with purpose.





# HERE'S WHY LEADING BUSINESSES TRUST US:

- 1 Multi-Sector Expertise**  
From corporate offices and healthcare to hospitality, retail, and F&B — we bring sector-specific insight to every project.
- 2 High-Quality Finishes**  
Precision-crafted environments where every detail reflects excellence.
- 3 Timely Delivery**  
Projects delivered on schedule, without compromising on quality or vision.
- 4 In-House Design & Engineering Team**  
Seamless collaboration from concept to completion — with full control over design, execution, and quality assurance.
- 5 Tailored Approach**  
Every client, every space, every solution — customized to meet the unique needs of your industry and identity.

# Excellence Built on Experience, Quality Driven by Commitment

## Contact Us

Riyadh | Kingdom of Saudi Arabia

T 011 464 0233 | [info@albani.sa](mailto:info@albani.sa)

[www.albani.sa](http://www.albani.sa)

